



GAS FILTER USER INSTRUCTIONS

SYSTEM DESCRIPTION

Gas filter is an optional accessory for TRIDENT® HEXHALE® PAPR.



WARNING



- The gas filter must always be used together with the TRIDENT® HEXHALE® particle filter. The gas filter gives additional protection against certain gaseous environments.
- The particle filter and gas filter cannot be cleaned. Stop using it immediately if the filter emits an unusual odour, and replace it until you are in a safe area.
- Store at a temperature between -10°C to 55°C (14°F to 131°F), in a clean environment without direct light.
- Please install the particle filter and gas filter according to the image below.

ASSEMBLING THE GAS FILTER

- Press down the latch on the side of the filter cover to remove it (fig. 1).
- Insert the gas filter tab into the slot on the side of the blower unit and press down until it clicks into place (fig. 2).
- Insert the filter cover tab into the slot on the side of the gas filter cartridge and press down until the latch clicks into position (fig. 3).

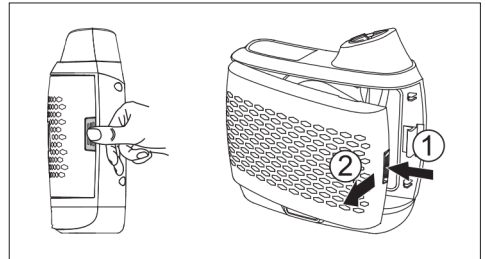


fig.1

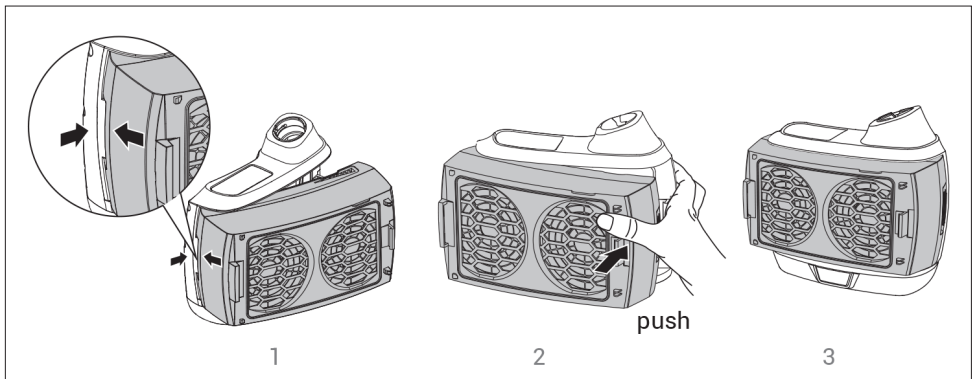


fig. 2



GAS FILTER USER INSTRUCTIONS

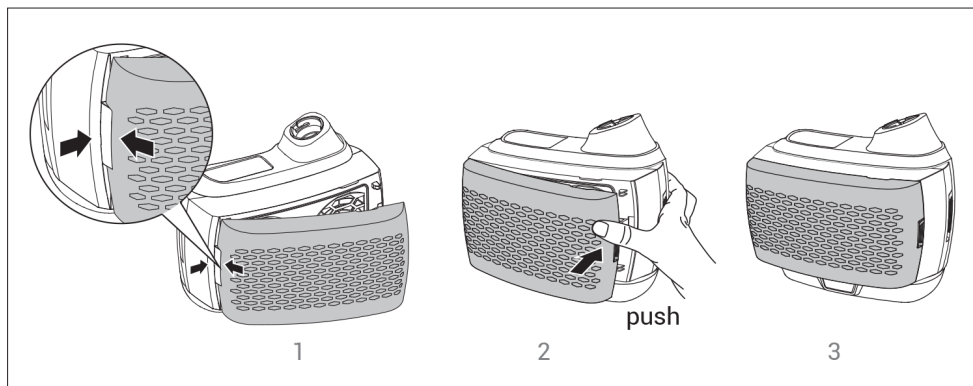


fig. 3

REPLACING THE GAS FILTER

- Press down the latch on the side of the filter cover to remove it (fig. 1).
- Press down the latch on the side of the gas filter to remove it. Install the new gas filter by following the reverse steps (fig. 4).

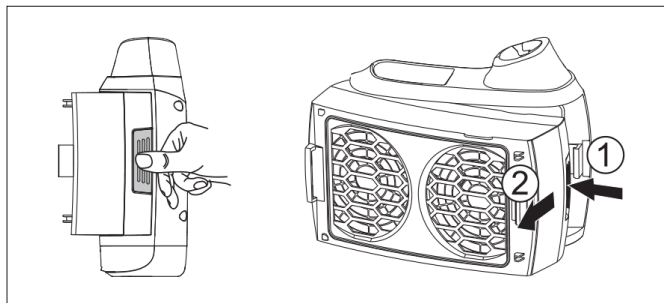


fig. 4